

IMPORTANT-READ FIRST

NGL GRILL LIGHT APP CONFIGURATION INSTRUCTIONS

Learn more about:

Learn more about all our lighting products for home and business at NGLscorp.com



3555 S 700 W • Suite A • Salt Lake City, Utah 84119
Toll Free: +1 844-451-9958 • NGLscorp.com

1 Manage Devices



Device Configuration

2

Device Selected



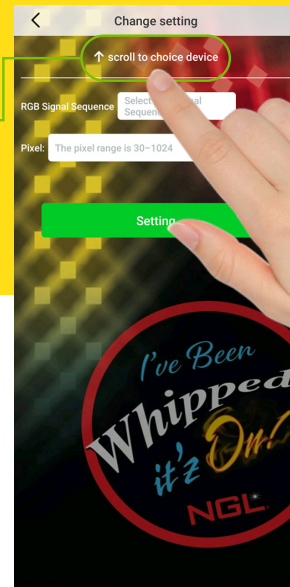
Device Connected

3

Please select a device
Swipe Upward

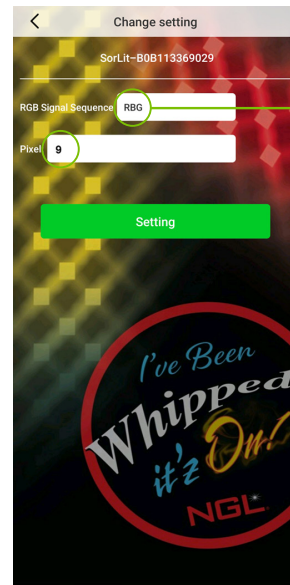
NOTE:

This is a critical step and often overlooked. Make sure you swipe Upward to locate your device.



4

Change if red is blue or green and visa versa



5

Devices Not Selected

Device Disconnected

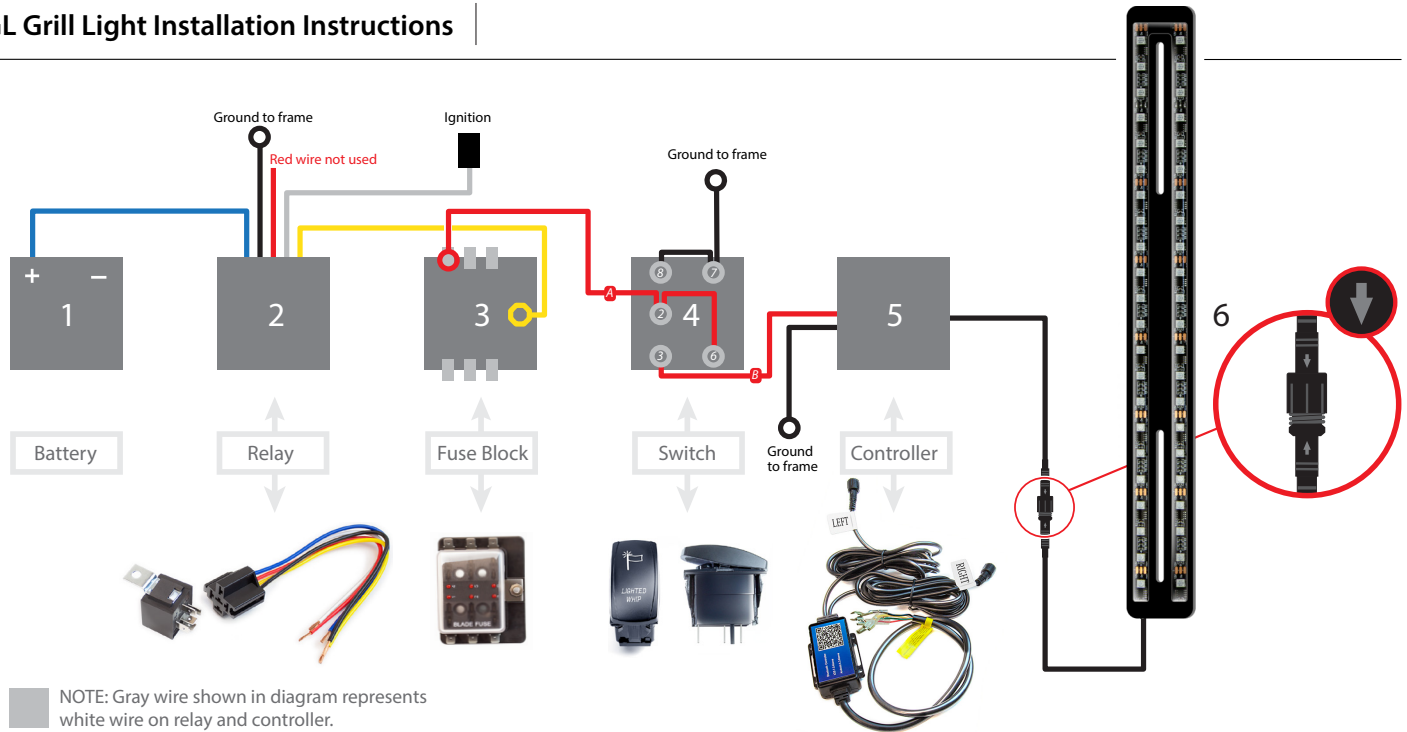


CAUTION:

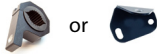
To prevent damage from occurring, please read instructions carefully and completely before proceeding with Installation.

Not following instructions as indicated may void your warranty.

NGL Grill Light Installation Instructions



* NOTE: it may be necessary to remove seats, panels and trim for easy access to run wires and cables.

1. Find a suitable location where the **Controller(5)** can be safely mounted while being protected from damage (preferably under the dash with easy access to the wires) and allowing for enough cable to reach the whip cable.
 - **Action:** Mount with 2 screws or bolts.
2. Find a location under the dash to mount the fuse **Relay(2)** and the **Fuse Block(3)**.
3. Choose a location for the **Switch(4)**.
 - **Action:** If available remove the blank in the dash board and mount **Switch(4)**.
4. Choose a location to mount your **Grill Light(6)**.
 - **Action:** If necessary or preferred, use brackets to mount to the roll cage (brackets sold separately). 
5. Run whip cable through the bracket towards the **Controller(5)** keeping the cable protected from damage.
 - **Action:** Connect **Controller(5)** cables to the whip cables. **Make sure the black arrows are aligned (see 6). Protect the connections from damage.**

Wiring the Controller(5):

- **Red** wire goes to the **Red B** wire on **Switch(4)**
- **Black** wire to ground
- **White** wire to brake signal from SXS brake system or signal switch brake signal
- **Green** wire to right turn from signal switch
- **Yellow** wire to left turn from signal switch

Wiring the Relay(2):

- **Black** wire to ground
- **Blue** wire to battery positive
- **White** wire to a powered signal from a key on position
- **Yellow** wire to the stud on the **Fuse Block(3)**
- **Red** wire not used

Wiring the Switch(4):

- **Red A** Wire to **Fuse Block(3)**
- **Red B** wire to **Controller(5)**
- **Black** wire to ground

Learn more about:

Learn more about all our lighting products for home and business at NGLscorp.com



3555 S 700 W • Suite A • Salt Lake City, Utah 84119 • Support +1 844-451-9958 • NGLscorp.com